



IVAO
THAILAND

Event Briefing for Pilots 3 – Ways Bound

09 February 2024 12:00z – 16:00z

INTERNATIONAL VIRTUAL AVIATION ORGANISATION
THAILAND DIVISION

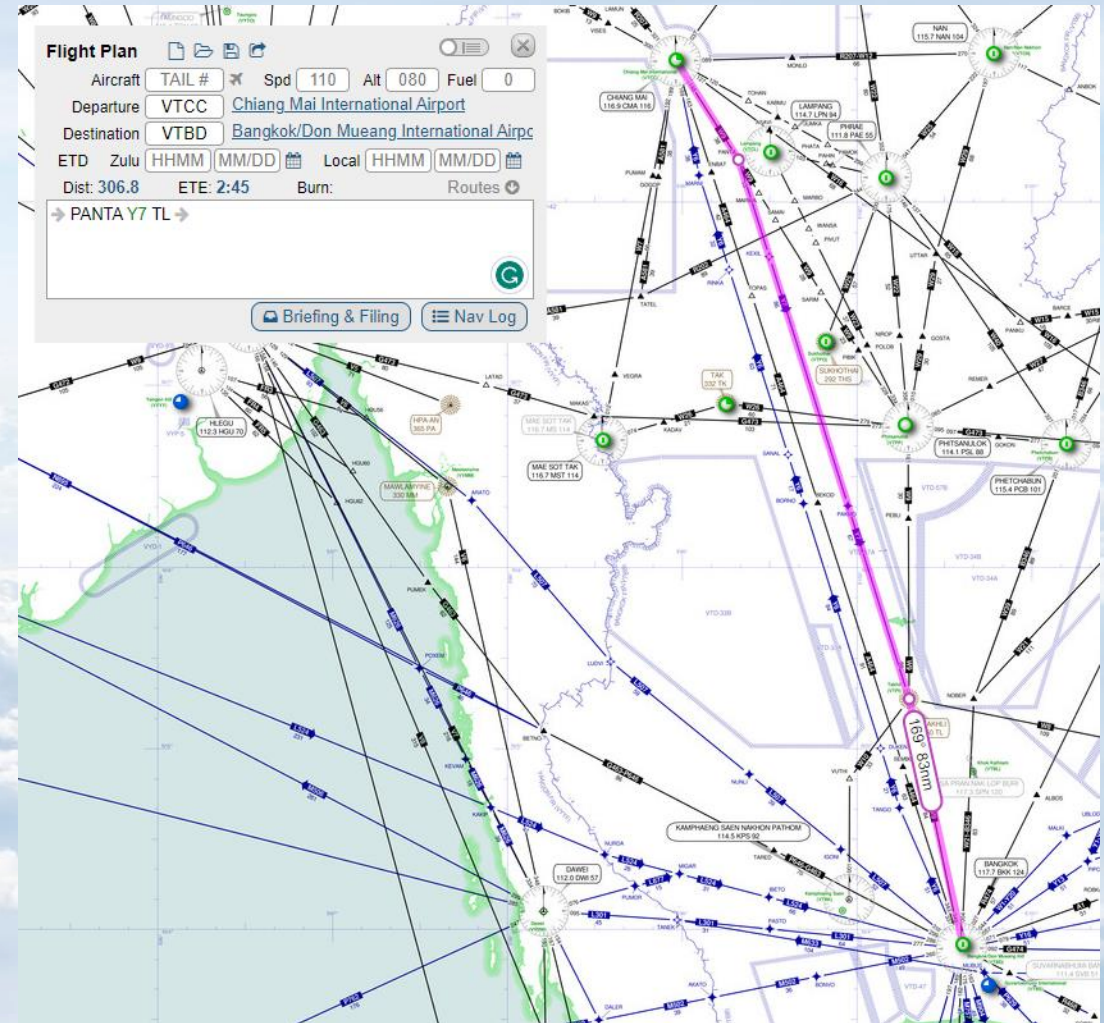
Contents

- Event Briefing
 - Chiang Mai (VTCC) – Don Mueang (VTBD)
 - Phuket (VTSP) – Don Mueang (VTBD)
 - Ubon Ratchathani (VTUU) – Don Mueang (VTBD)
- Briefing Topic
 - Flight Preparation
 - Taxi Out
 - Departure
 - Arrival
 - Approach
 - Taxi In

Flight Preparation (VTCC)

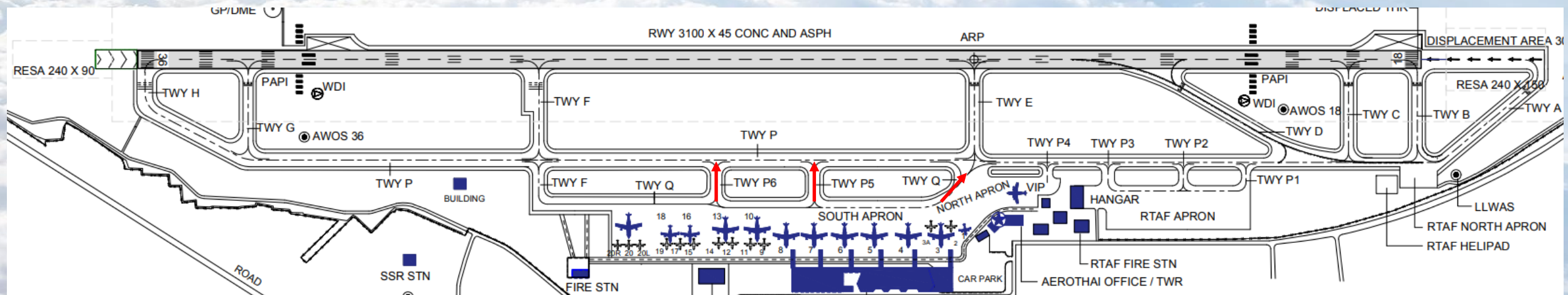


- Route
 - PANTA Y7 TL (Takhli NDB)
 - Available FL:
 - Odds Number Flight Level
 - From FL130 – FL450



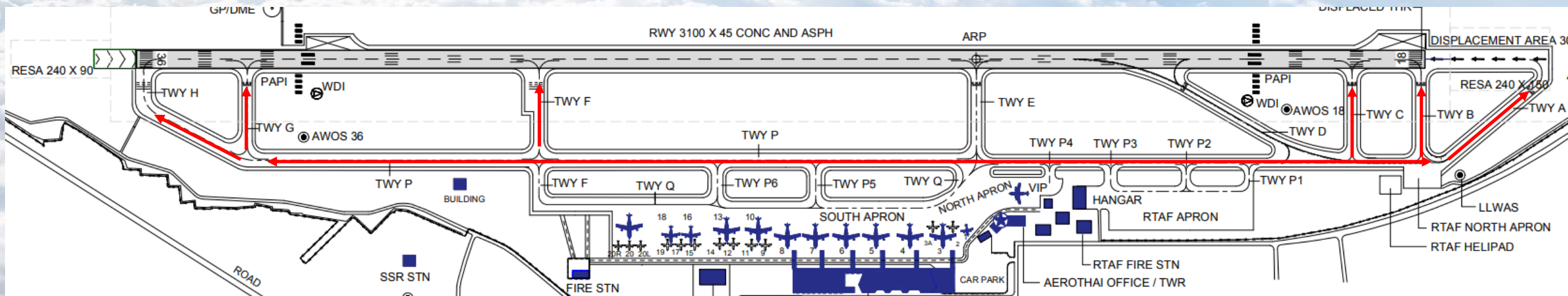
Taxi Out (VTCC)

- Aircraft shall be pushback onto TWY Q
- Then will be instruct to taxi to TWY P via F, P5, P6 or Q



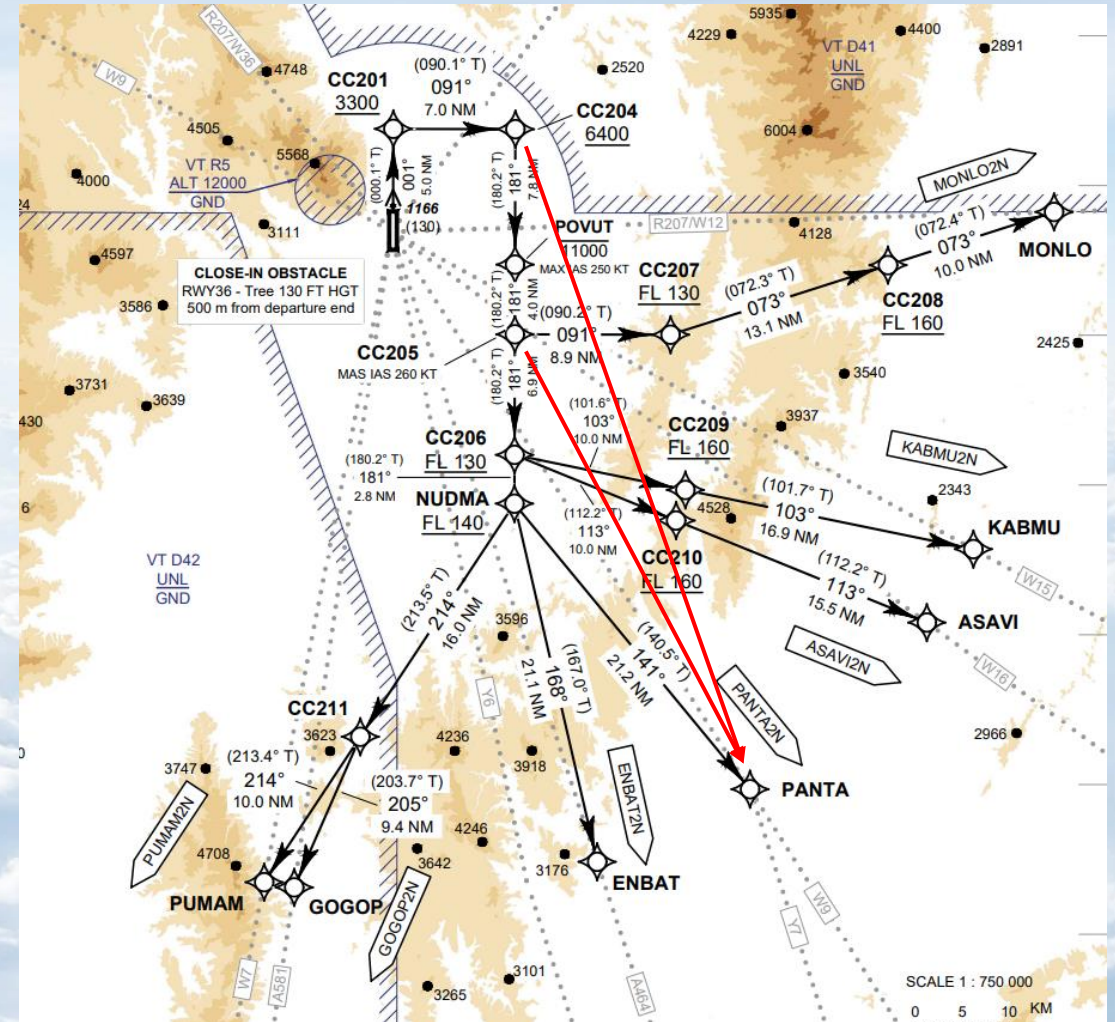
Taxi Out (VTCC)

- Depending on the wind, aircraft will be instructed to taxi to the runway in use via TWY P.
- Taxiway G and F is available on request for RWY 36
- Taxiway B and C is available on request for RWY 18



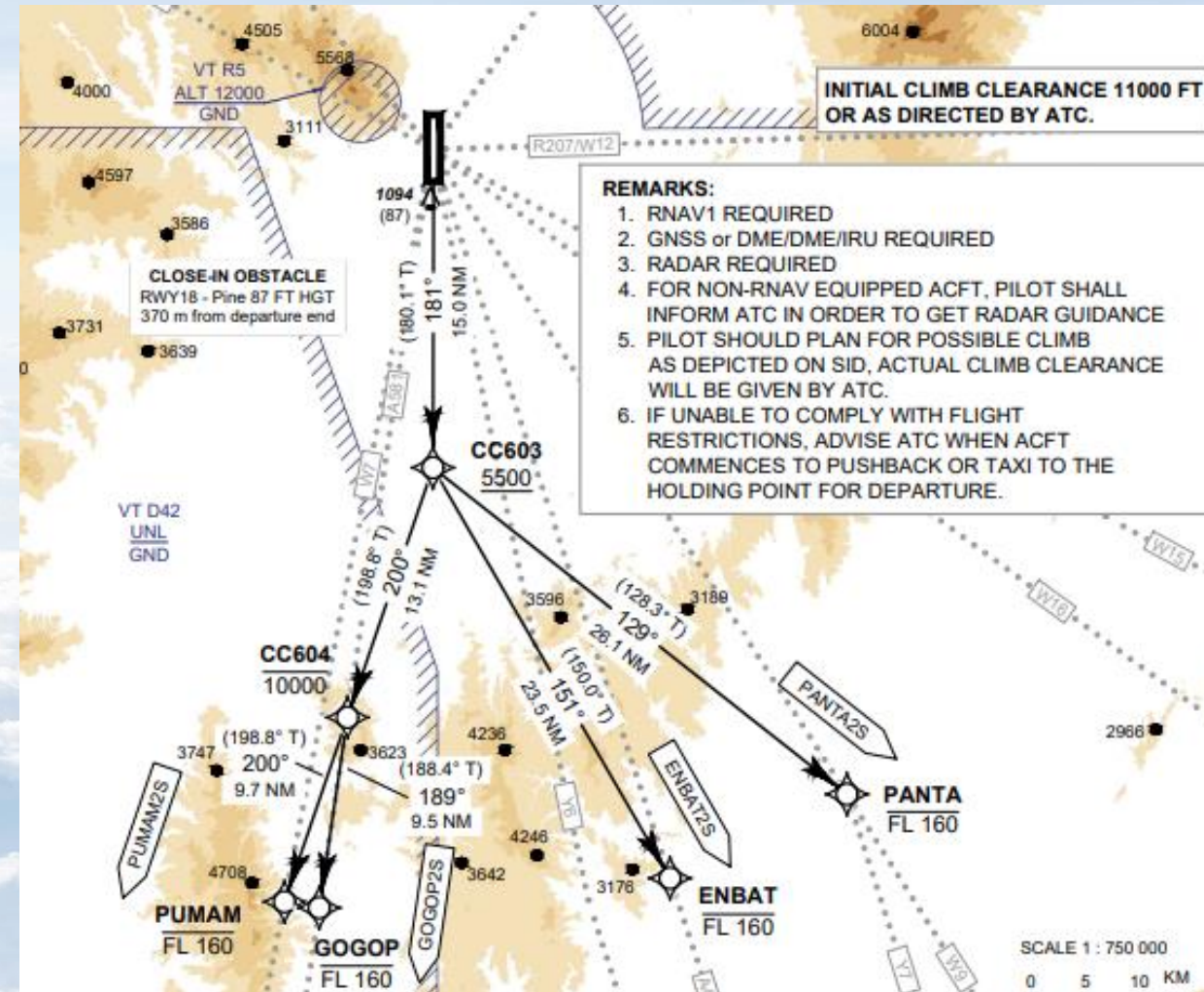
Departure (VTCC) RWY 36

- First aircraft can expect
 - When passing 3,000 ft direct to PANTA
 - Cancel Level Restriction
 - High-Speed Climb



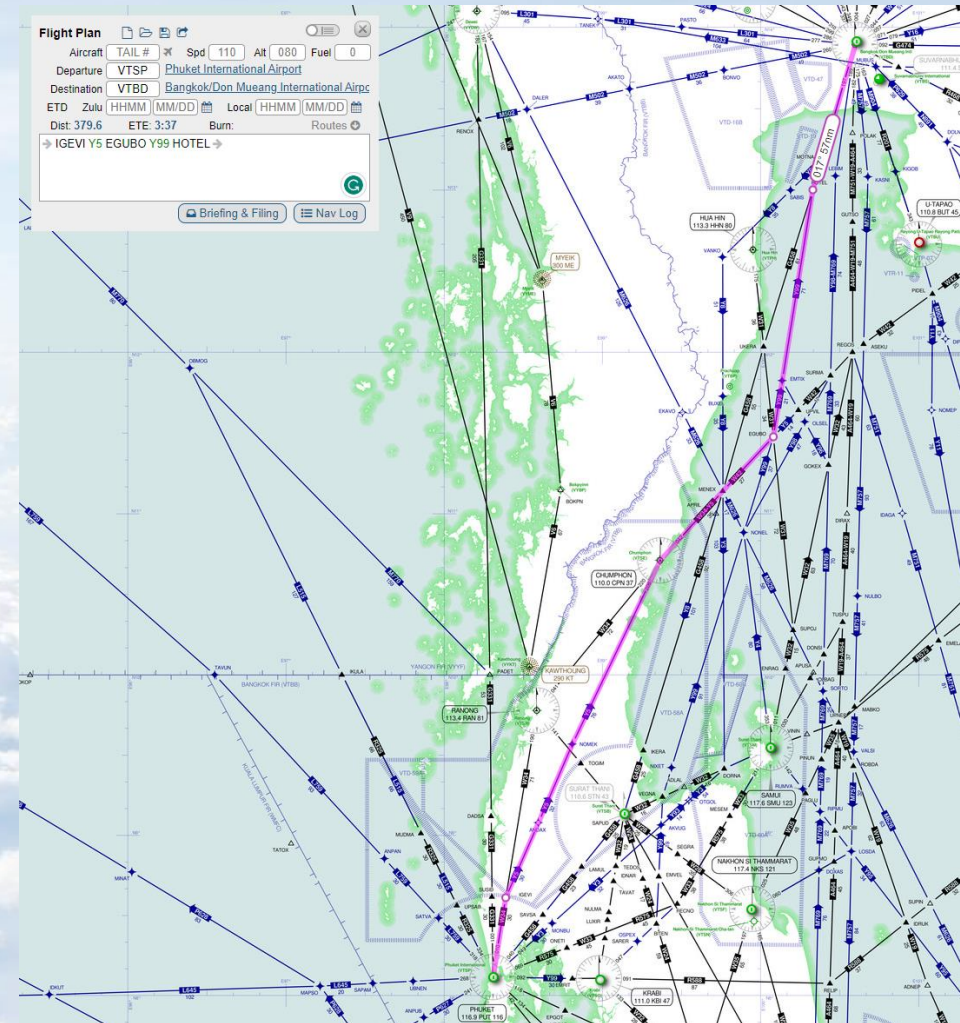
Departure (VTCC) RWY 18

- First aircraft can expect
 - When passing 3,000 ft direct to PANTA
 - Cancel Level Restriction
 - High-Speed Climb



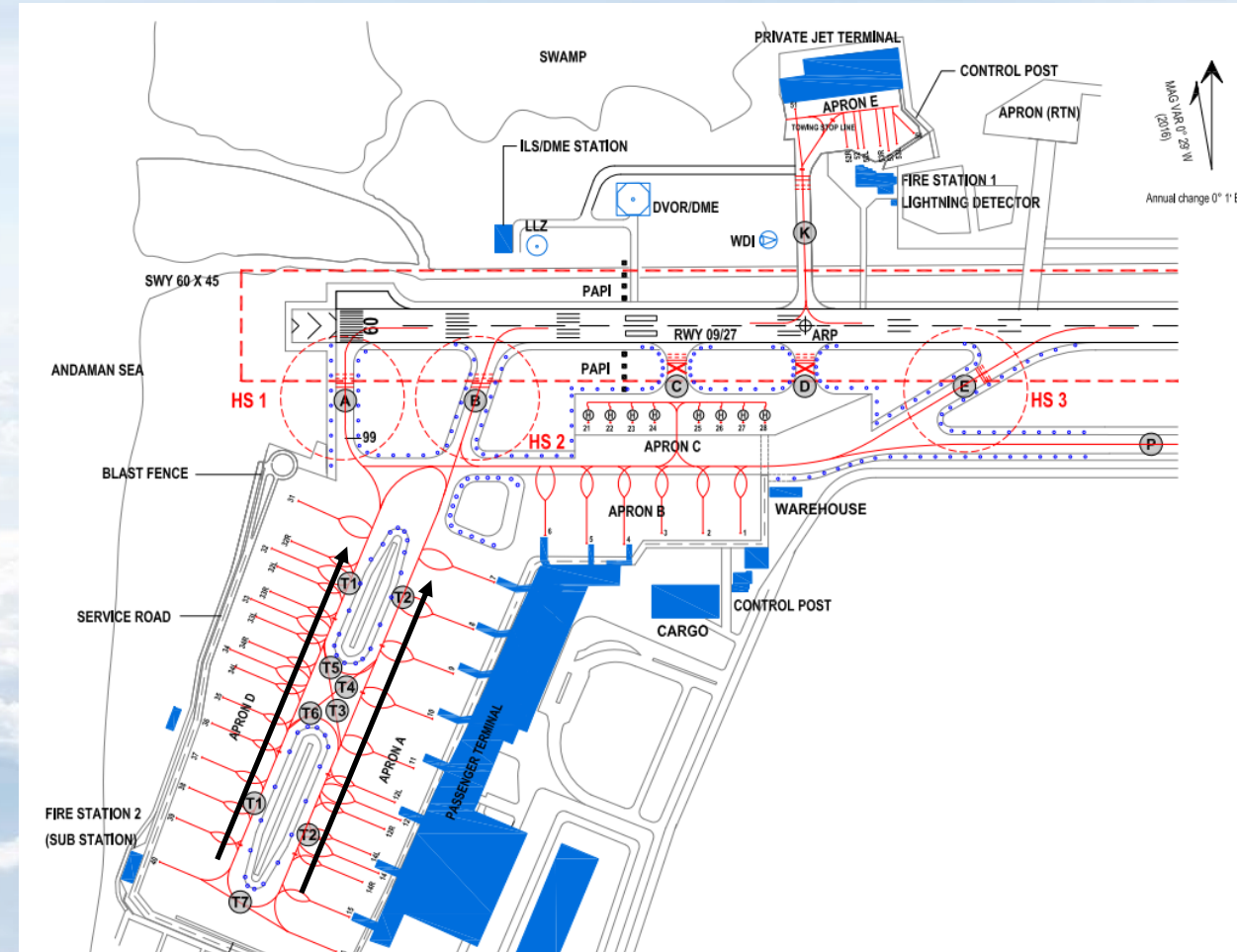
Flight Preparation (VTSP)

- Route
 - IGEVI Y5 EGUBO Y99 HOTEL
- Available FL
 - Odds Number Flight Level
 - From FL130 – FL450



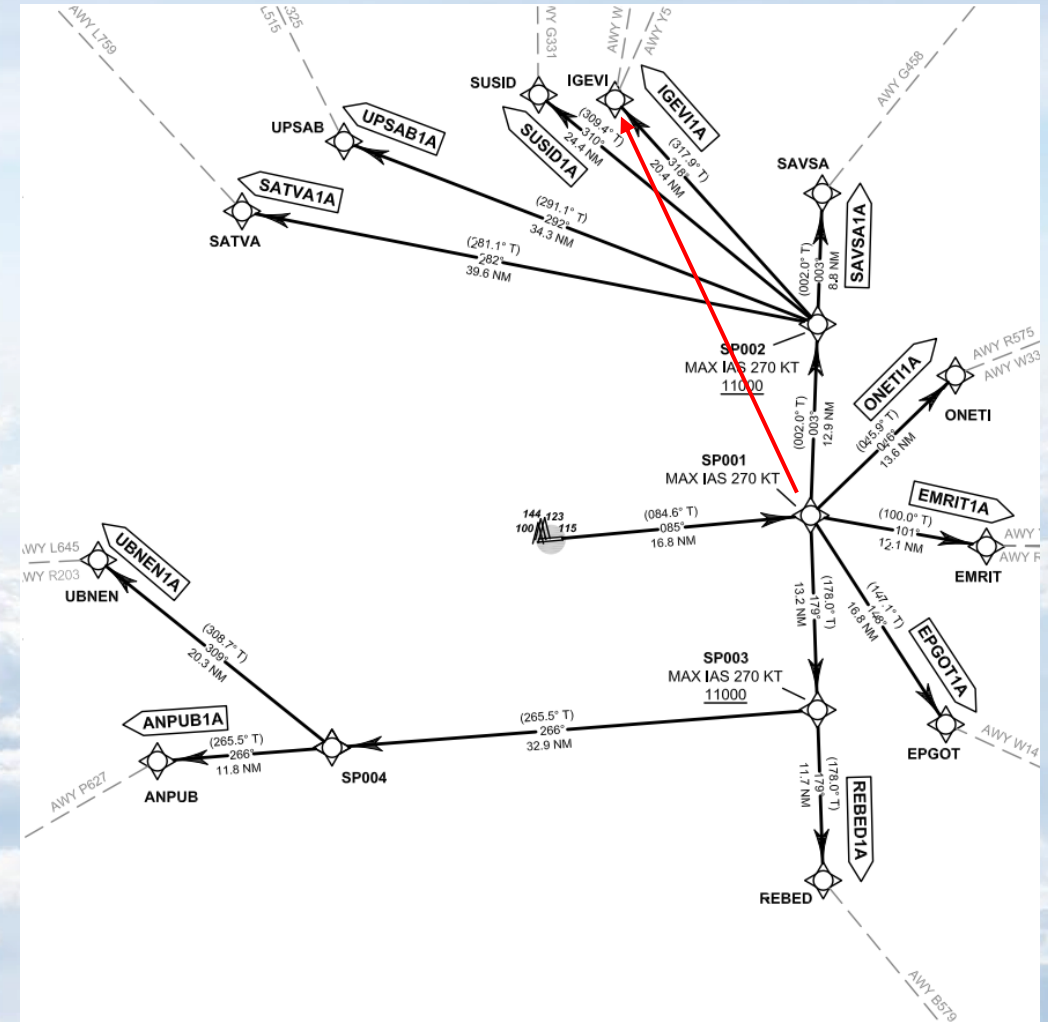
Taxi Out (VTSP)

- Aircraft shall be pushback onto TWY T1, T2 or C
- Depending on the wind, aircraft will be instructed to taxi to the runway in use via TWY C.
- Taxiway B is available on request for RWY 09



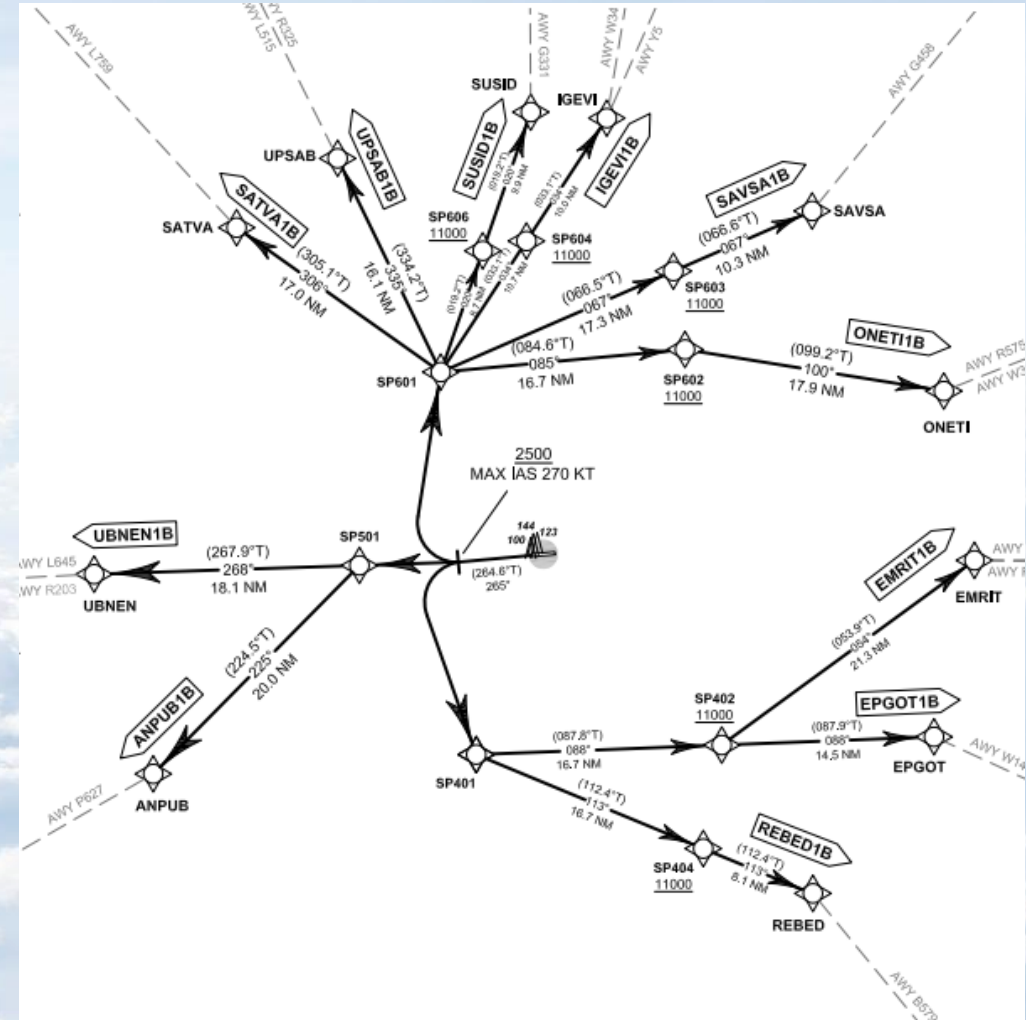
Departure (VTSP) RWY 09

- First aircraft can expect
 - When passing 2,500 ft direct to IGEVI
 - Cancel Level Restriction
 - High-Speed Climb



Departure (VTSP) RWY 27

- First aircraft can expect
 - When passing 2,500 ft direct to IGEVI
 - Cancel Level Restriction
 - High-Speed Climb

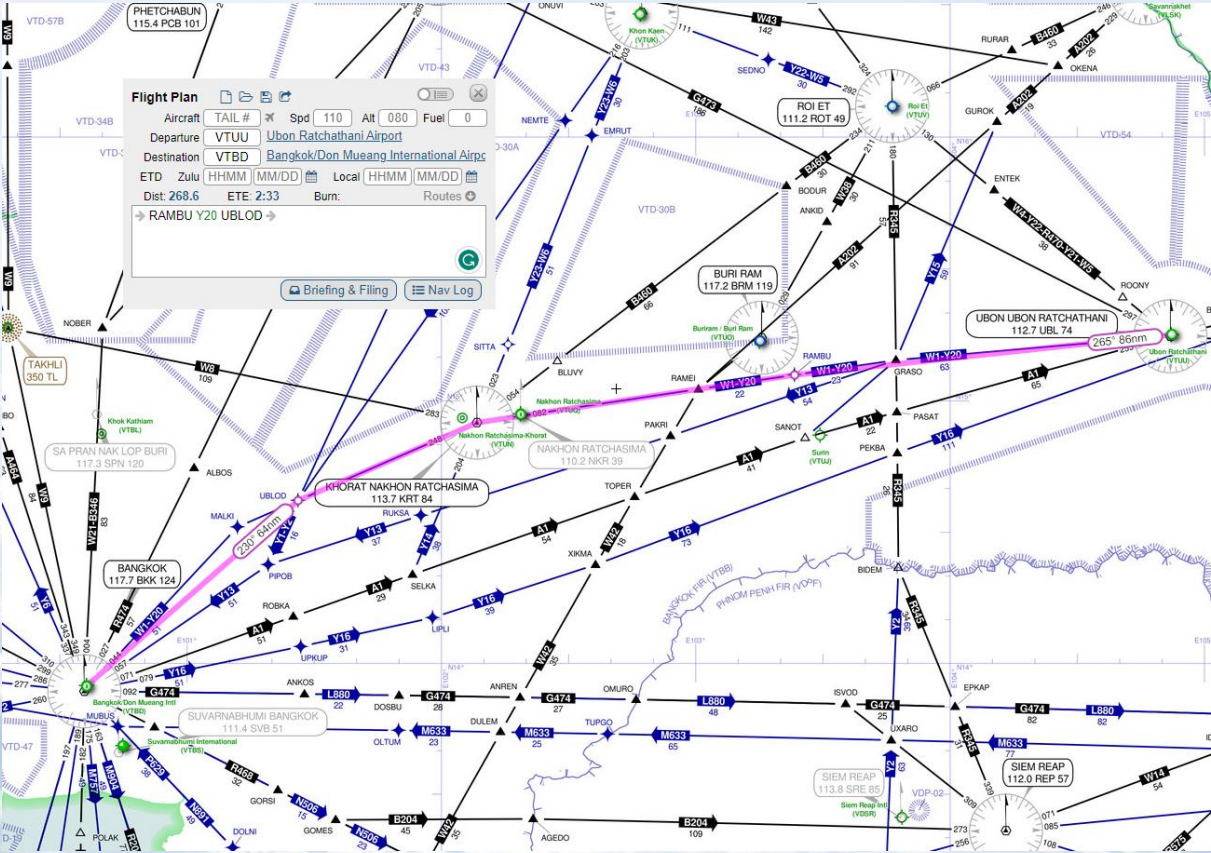


Flight Preparation (VTUU)



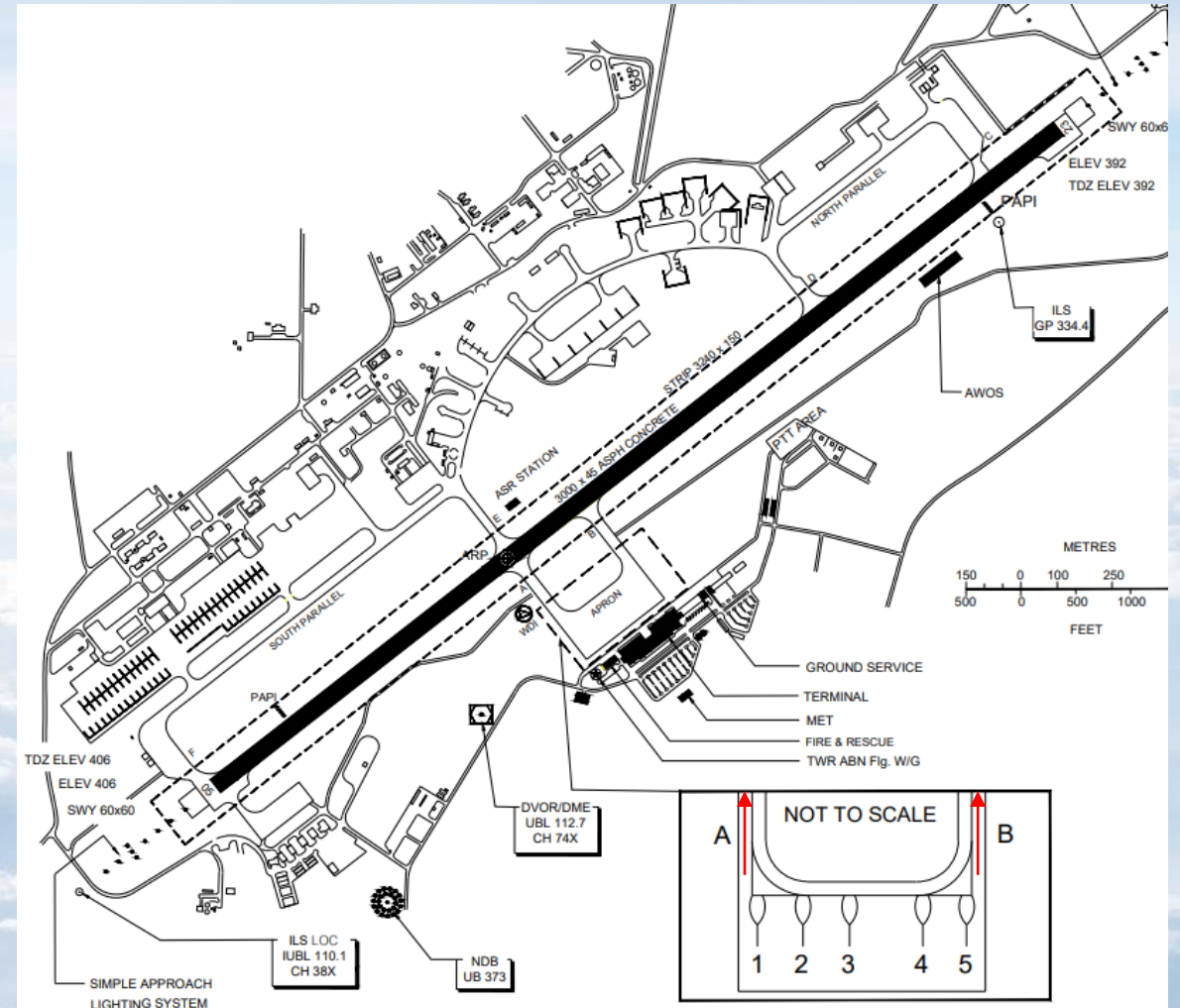
- Route

- RAMBU Y20 UBLOD
- Available FL
 - Even Number Flight Level
 - From FL130 – FL450



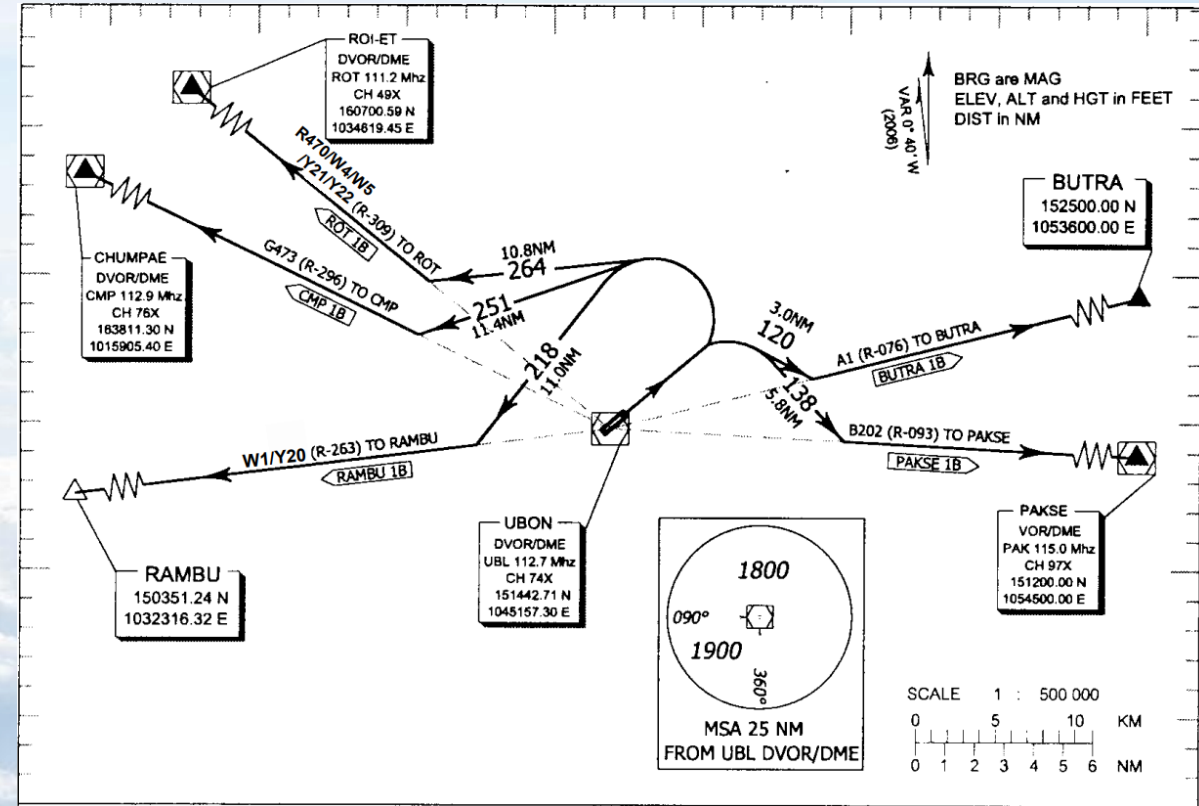
Taxi Out (VTUU)

- Aircraft shall be pushback facing East / West.
- Depending on the wind, aircraft will be instructed to taxi and backtrack to runway in use via TWY A or B.



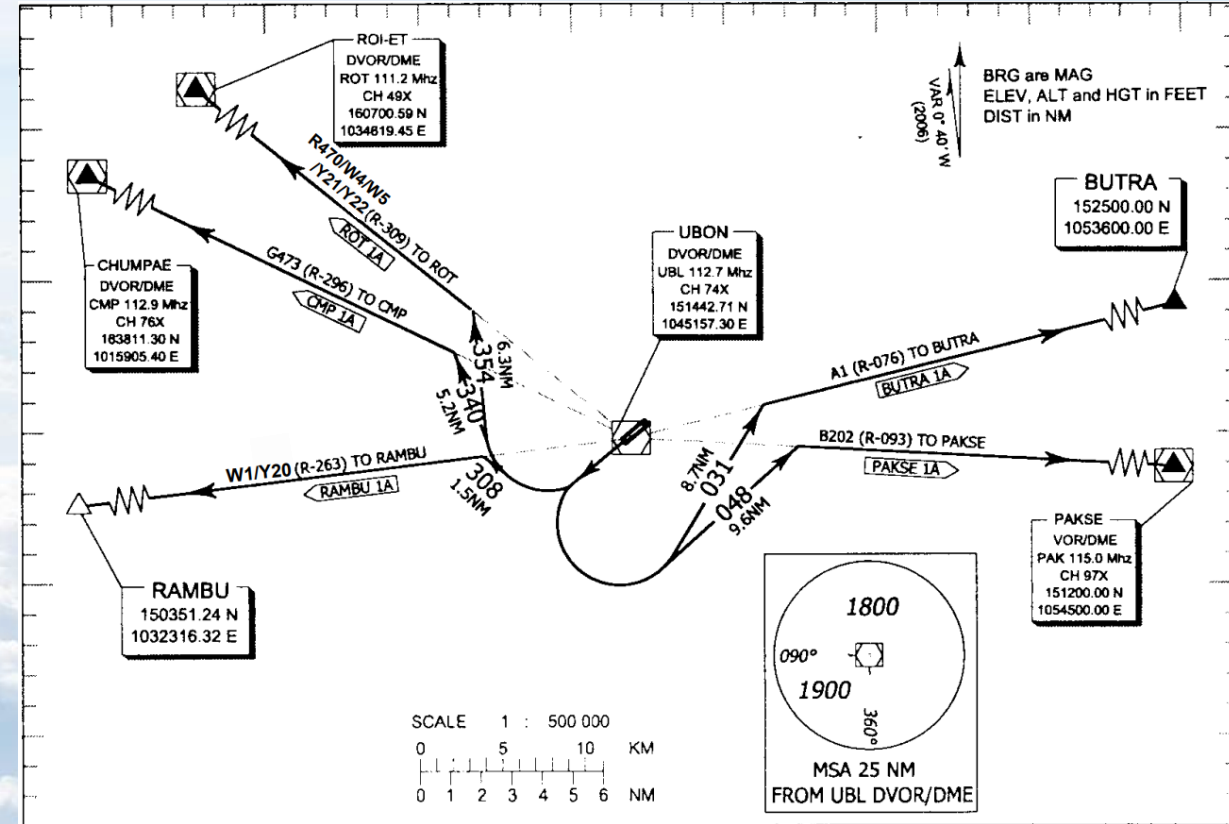
Departure (VTUU) RWY 05

- First aircraft can expect
 - High-Speed Climb



Departure (VTUU) RWY 23

- First aircraft can expect
 - High-Speed Climb



Numerous Traffic at Destination (VTBD)



- Due to numerous traffic at the destination, the area or approach controller may instruct the traffic to leave any waypoint at a specific time.
- Examples of waypoints are ENDUU, NAKON, and SABAI.
- When the time constraints are given to the pilots, they must adjust the aircraft speed to cross that waypoint at the given time.
- If pilots reduce speed to a minimum clean speed but cannot cross at the given time, they must hold the aircraft at that waypoint as published in the chart or instructed by the controller. Pilots may leave the waypoint at the given time.

ATC Example at Destination (VTBD)

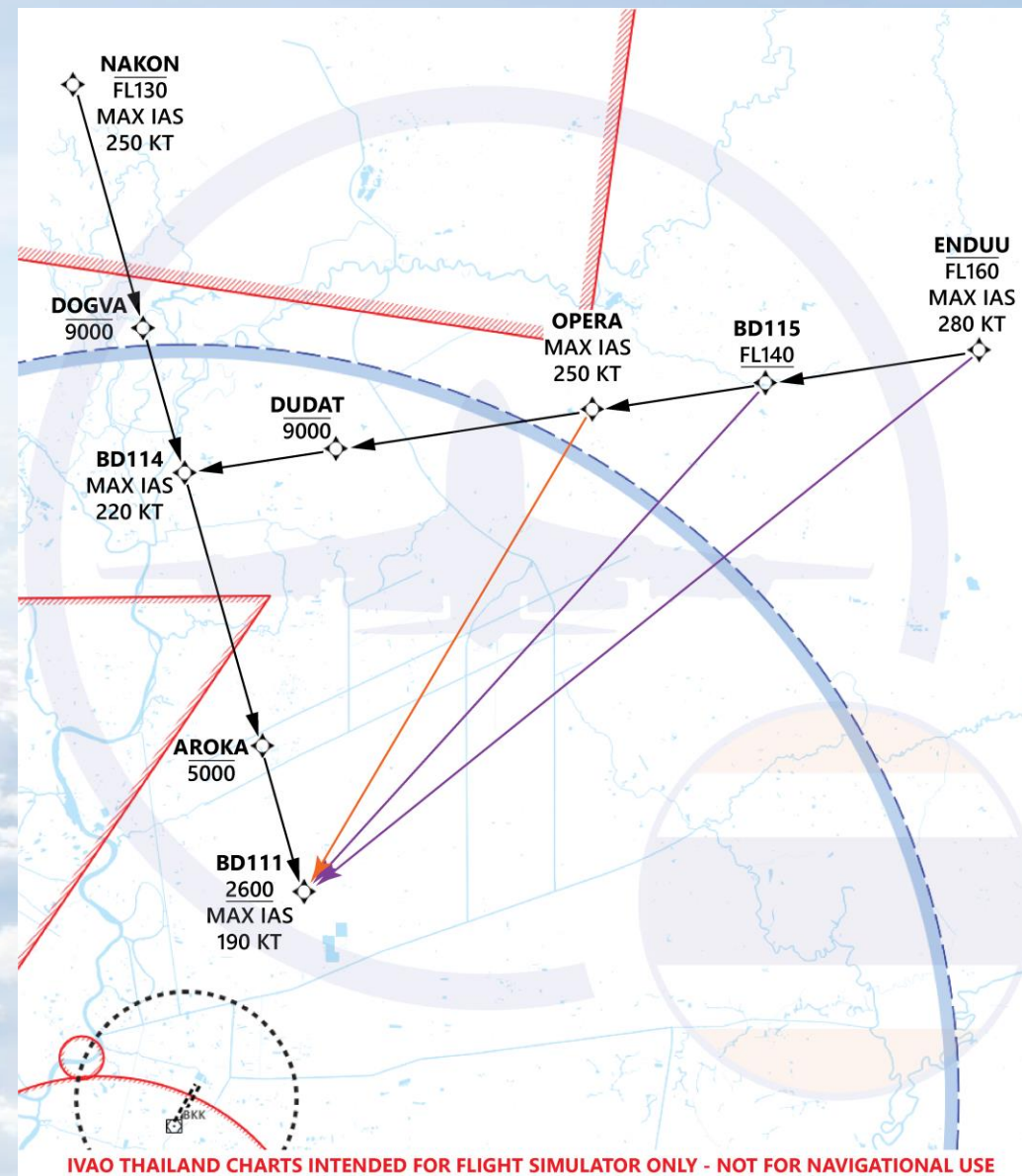


- ATC: expect leave NAKON time 52.
- Pilot need to leave waypoint NAKON at time 52. If unable, pilot needs to hold over NAKON.
- ATC: Hold over NAKON as published.
- Check chart for the holding instruction.
 - NAKON: Right hand pattern course inbound 165
 - ENDUU: Right hand pattern course inbound 240
 - SABAI: Left hand pattern course inbound 001

Arrival (VTBD)

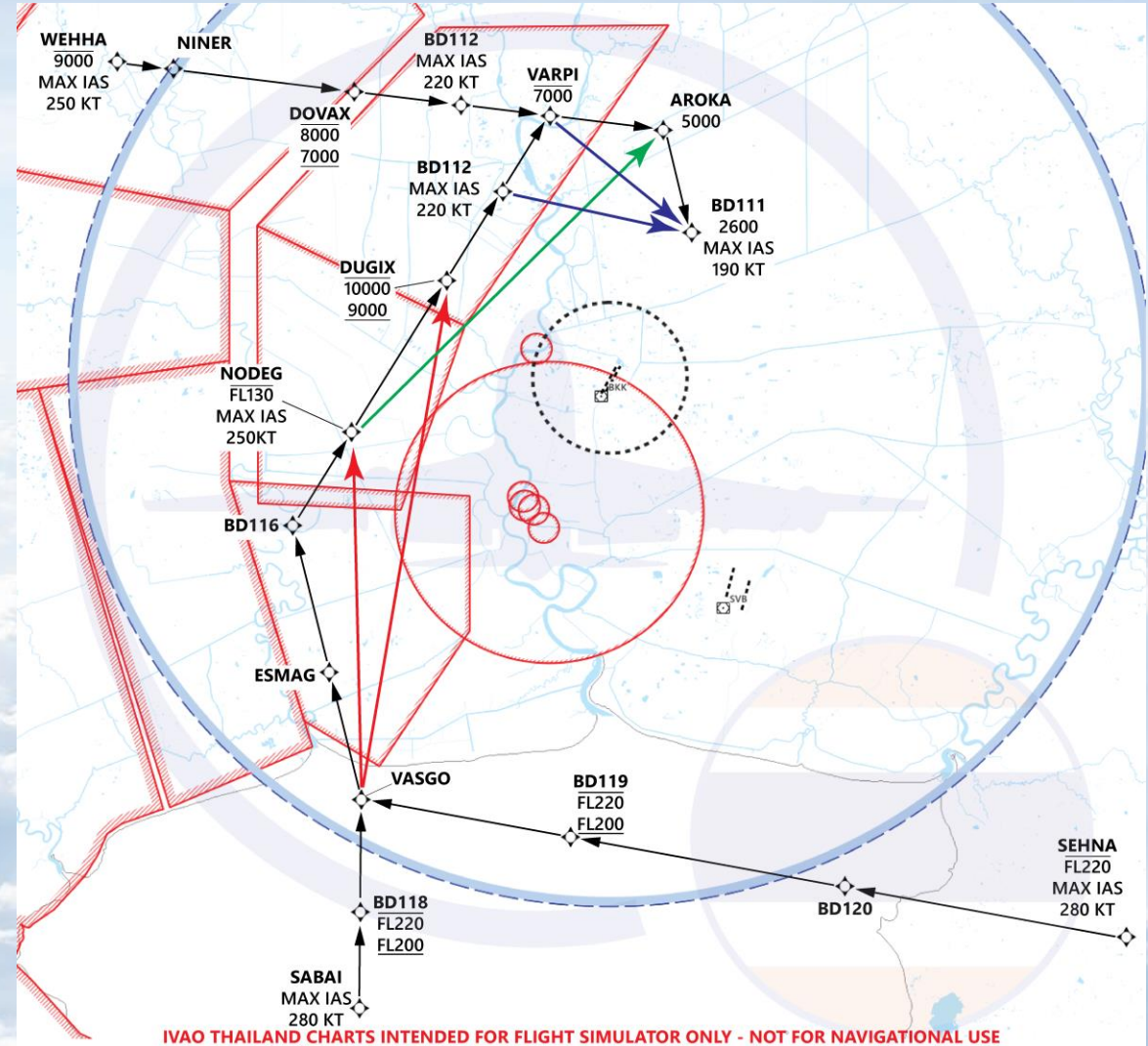
- Aircraft arriving from VTUU can expect direct to BD111 from:

- ENDUU
- BD115
- OPERA

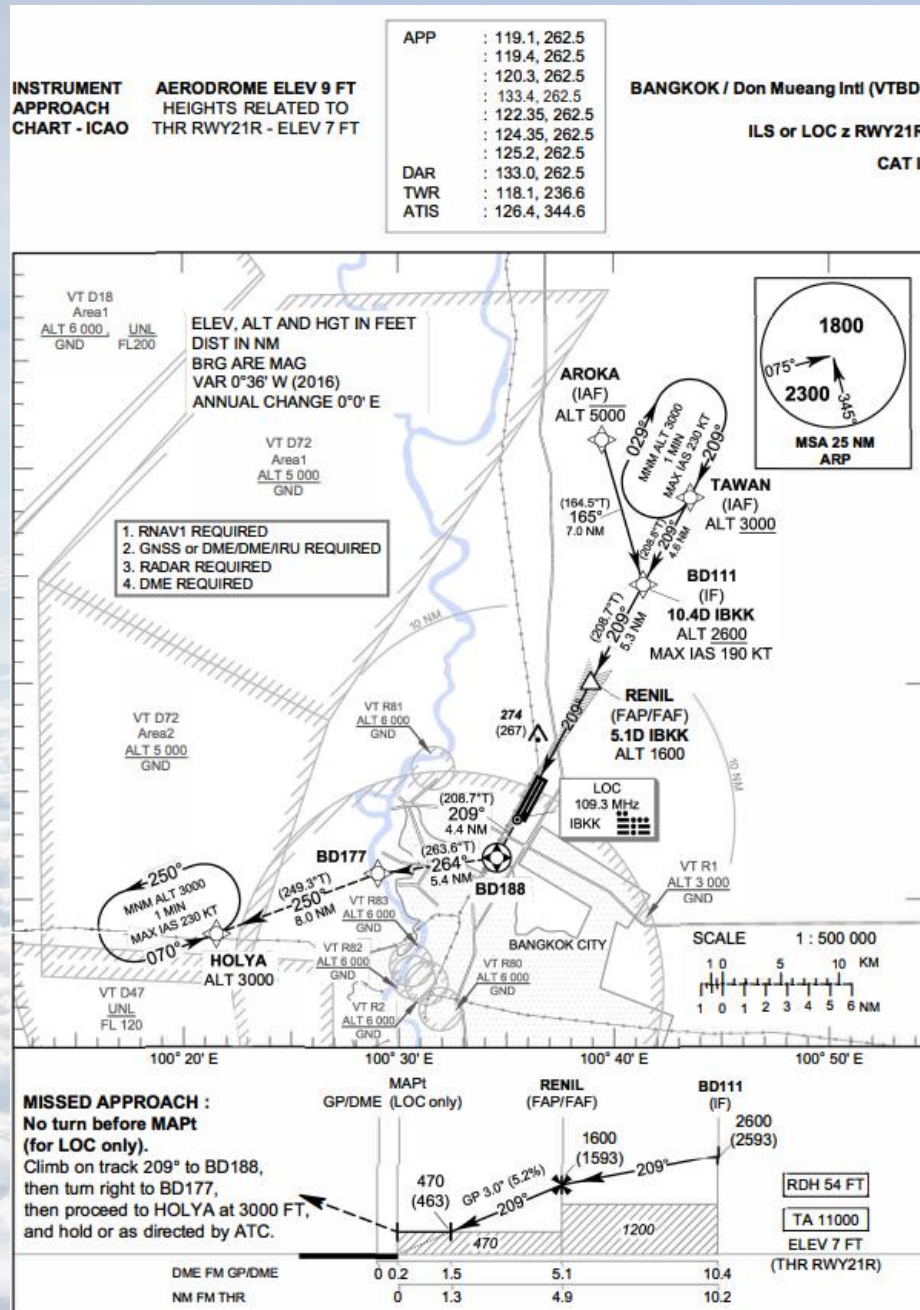


Arrival (VTBD)

- Aircraft arriving from VTSP can expect after VASGO direct to:
 - NODEG
 - DUGIX
- After NODEG direct to AROKA
- Direct to BD111 after:
 - BD112
 - VARPI



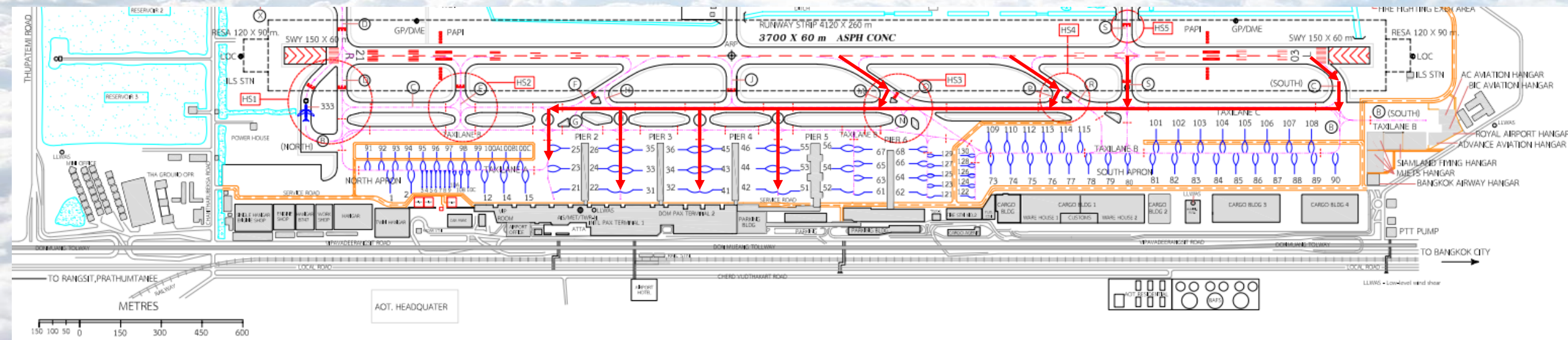
Approach (VTBD)



- Runway 21R will be use for arrival and 21L will be use for departure.
- To avoid separation issue aircraft shall:
 - Fly 180 kt at BD111
 - Fly 160 kt until 5NM from touchdown

Taxi In (VTBD)

- Aircraft shall vacate on:
 - TWY O – M – C
 - TWY R – P – C
- Aircraft will be instructed to taxi on TWY C then turn left into gate.





IVAO
THAILAND

THANK YOU

**INTERNATIONAL VIRTUAL AVIATION ORGANISATION
THAILAND DIVISION**